



9001:2015  
AN ISO CERTIFIED COMPANY



# PIPING THE FUTURE



AGRIFLOW PRESSURE  
PIPES & FITTINGS

AQUAFLOW uPVC  
PLUMBING SYSTEM

HIGHTECH CPVC  
PLUMBING SYSTEM

DRAIN MASTER  
DRAINAGE SYSTEM



# About Company

**Shivjal Pipes** is the leading PVC pipes manufacturer who are well-known for offering the high-quality services. **Shivjal Pipes** an ISO-9001:2015 company is principally catering to the agricultural sector with a wide array of pipes and accessories for irrigation as well as smart piping solutions for industrial domains. **Shivjal Pipes** products are manufactured and energized to offer diligent life to meet every need for end-users. At **Shivjal Pipes**, we are dedicated to making innovations in irrigation, sewage, and plumbing technologies.

With an ultra-modern manufacturing facility in Ahmednagar (Maharashtra - India), **Shivjal Pipes** caters to farmers' needs across the nation through extremely strong and diligent distributors' network. From Agri pipes to Sanitation pipes, each product manufactured at **Shivjal Pipes** undergo a quality control test so as to ensure that it conforms to both international as well as Indian standards. Having good experience, we are one of the most reputed PVC Pipes & Fittings manufacturers in India.

Keeping in mind the goal to become the top pvc pipe manufacturer in India, the team of professionals at **Shivjal Pipes** always ensure customer service and satisfaction by offering finest range of high-quality pipes and fittings at the most reasonable prices

## - Vision -

**Shivjal Pipes** endeavor to become a learning and knowledge-based organization. The company will establish itself as to be the global face of the industry and help farmers by providing them with value-for-money products and services in order to effortlessly maximize their farm produce. **Shivjal Pipes** will be a preferred supplier by offering quality products to its customers and generate wealth to serve its customers, the surrounding community, and the nation.

## - Mission -

To create a win-win environment by using smart best technology, in-depth research and worlds best infrastructure to provide affordable solutions in agriculture. To enable sustainable growth through customer service, resourceful innovation, excellent quality and 100% commitment.

## - Quality Policy -

Priority of **Shivjal Pipes** is to achieve complete customer satisfaction in all its processes by consistently matching or exceeding expectations. We aspire to be supplier of high-quality PVC pipes to all our customers. We dedicate ourselves to continual improvements in product quality and customer service. We shall ensure that the customers receive our products with affordable prices and best quality.

- Continuous improvement in Product Quality.
- Up gradation of Manufacturing Technology and Skills.
- Conformance to Customers' Expectations with no deviation.
- Controlled Quality Management System.

## - Infrastructure -

The Top Management having a vast on ground experience in the field, **Shivjal Pipes** has a well-built Organization Structure. Our Administrative Office is well established with experienced and skilled staff's.

**Shivjal Pipes** manufacturing plants are equipped with the most modern machineries from Global leader of PVC extrusion

machines manufacturing, to ensure high quality **Shivjal Pipes** plant equipped with world class Testing laboratory to meet international as well as Indian standards. Technical support is made available from the lead engineers in respective fields to achieve the committed quality of products to the consumers. The plant is spacious enough to accommodate multi fold expansion and addition to the production base.

Our plant is also equipped with high quality dies and moulds to meet perfect product specifications. Use of chilling plant in the production process to maintain uniformity in entire process to meet high quality output. We give utmost importance to the production infrastructures to ensure quality.

Timely delivery of our product to the market and to the distributor network by **Shivjal Pipes** own fleet of heavy vehicles is another feather on the cap.

## - Quality Testing -

Well-equipped modern technology Testing laboratory for Pipes testing as per BIS standards. Testing facilities also available for incoming Raw material Testing. Equipment available for following tests.

### • Dimension

- a) Diameter
- b) Wall Thickness
- c) Length
- d) Socket Dimensions

- Opacity Test
- Effect on Water Test
- Reversion Test
- Vicat Softening Test
- Density Test
- Sulphated Ash test
- Mechanical Property Test
- Internal Hydrostatic Pressure
  - (a) Long Term
  - (b) Short Term
- Resistance to external blow



INTERNATIONAL  
As Per ASTM Standards  
ASTM D 1785

IS 15778



INTERNATIONAL  
As Per ASTM Standards  
ASTM D 2467

SI 13592



INTERNATIONAL  
As Per ASTM Standards  
ASTM D 2846

IS 4985



IS 7834



IS 14735



CM/L-7500239712 | CM/L-7500238912





Shivjal®  
**AGRFLOW**  
PRESSURE UPVC PLUMBING SYSTEM



# uPVC PRESSURE PIPES & FITTINGS



Shivjal Agriflow pipes are manufactured from quality raw material through most sophisticated extruding machines to ensure quality product with high strength and durability. Agriflow pipes and fittings are used for variety of applications like water supply, industrial process lines, agriculture, irrigation, sanitary and drainage.

### PIPES : IS :

IS 4985 Class - 1 (2.5Kg), Class - 2 (4 kg),  
Class - 3 (6kg), Class-4 (8kg),  
Class -5 (10 kg), Class - 6 (12.5kg)

### FITTINGS:

IS 7834 -2.5 kg, 4 kg, 6 kg

### AVAILABLE SIZE :

63mm to 200mm

### APPLICATIONS:



Agriculture



Irrigation



Residence



Commercial Complex



Industries



Normal Size	Mean Outside Diameter		Class 1 2.5 kg (Wall Thick)		Class 2 4 kg (Wall Thick)		Class 3 6 kg (Wall Thick)		Class 4 8 kg (Wall Thick)		Class 5 10 kg (Wall Thick)		Class 6 12.5 kg (Wall Thick)		Certifications
	Min	Max	Min	Max	Min	Max	Min	Max	Min	Max	Min	Max	Min	Max	
63mm	63.0	63.3	-	-	1.50	1.90	2.20	2.70	2.80	3.30	3.50	4.10	4.30	5.00	IS 4985   IS 7834   
75mm	75.0	75.3	-	-	1.80	2.20	2.60	3.10	3.40	4.00	4.20	4.90	5.10	5.90	
90mm	90.0	90.3	1.30	1.70	2.10	2.60	3.10	3.70	4.00	4.60	5.00	5.70	6.10	7.10	
110mm	110	110.4	1.60	2.00	2.50	3.00	3.70	4.30	4.90	5.60	6.10	7.10	7.50	8.70	
125mm	125.0	125.4	1.80	2.20	2.90	3.40	4.30	5.00	5.60	6.40	6.90	8.00	8.50	9.80	
140mm	140.0	140.5	2.00	2.40	3.20	3.0	4.80	5.50	6.30	7.30	7.70	8.90	9.50	11.00	
160mm	160.0	160.5	2.30	2.80	3.70	4.30	5.40	6.20	7.20	8.30	8.80	10.20	10.90	12.60	
180mm	180.0	180.6	2.60	3.10	4.20	4.90	6.10	7.10	8.00	9.20	9.90	11.40	12.20	14.10	
200mm	200.0	200.6	2.90	3.40	4.60	5.30	6.80	7.90	8.90	10.30	11.00	12.70	13.60	15.70	



# uPVC PRESSURE PIPES & FITTINGS



## AGRI UPVC PIPES (IS 4985)

### AGRI PIPES 2.5KG

CODE	SIZE		LENGTH
	MM	INCH	
SAP2500063	63	2"	20 FT
SAP2500075	75	2 ½"	20 FT
SAP2500090	90	3"	20 FT
SAP2500110	110	4"	20 FT
SAP2500140	140	5"	20 FT
SAP2500160	160	6"	20 FT
SAP2500180	180	7"	20 FT
SAP2500200	200	8"	20 FT



### AGRI PIPES 4 KG

CODE	SIZE		LENGTH
	MM	INCH	
SAP4000063	63	2"	20 FT
SAP4000075	75	2 ½"	20 FT
SAP4000090	90	3"	20 FT
SAP4000110	110	4"	20 FT
SAP4000140	140	5"	20 FT
SAP4000160	160	6"	20 FT
SAP4000180	180	7"	20 FT
SAP4000200	200	8"	20 FT

### AGRI PIPES 6 KG

CODE	SIZE		LENGTH
	MM	INCH	
SAP6000063	63	2"	20 FT
SAP6000075	75	2 ½"	20 FT
SAP6000090	90	3"	20 FT
SAP6000110	110	4"	20 FT
SAP6000140	140	5"	20 FT
SAP6000160	160	6"	20 FT
SAP6000180	180	7"	20 FT
SAP6000200	200	8"	20 FT

### AGRI PIPES 8 KG

CODE	SIZE		LENGTH
	MM	INCH	
SAP8000063	63	2"	20 FT
SAP8000075	75	2 ½"	20 FT
SAP8000090	90	3"	20 FT
SAP8000110	110	4"	20 FT
SAP8000140	140	5"	20 FT
SAP8000160	160	6"	20 FT
SAP8000180	180	7"	20 FT
SAP8000200	200	8"	20 FT

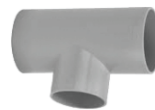
## AGRI FITTINGS (IS 7834)

### ELBOW



CODE	SIZE		QTY
	MM	INCH	
SAE0000063	63	2"	100
SAE0000075	75	2 ½"	120
SAE0000090	90	3"	65
SAE0000110	110	4"	36
SAE0000140	140	5"	-
SAE0000160	160	6"	-
SAE0000180	180	7"	-
SAE0000200	200	8"	-

### TEE



CODE	SIZE		QTY
	MM	INCH	
SAT0000063	63	2"	72
SAT0000075	75	2 ½"	84
SAT0000090	90	3"	50
SAT0000110	110	4"	26
SAT0000140	140	5"	-
SAT0000160	160	6"	-
SAT0000180	180	7"	-
SAT0000200	200	8"	-

### COUPIER



CODE	SIZE		QTY
	MM	INCH	
SAC0000063	63	2"	168
SAC0000075	75	2 ½"	68
SAC0000090	90	3"	120
SAC0000110	110	4"	68

### SHOE BEND



CODE	SIZE		QTY
	MM	INCH	
SASB000063	63	2"	-
SASB000075	75	2 ½"	92
SASB000090	90	3"	-
SASB000110	110	4"	52

# uPVC PRESSURE PIPES & FITTINGS



## REDUCER



CODE	SIZE		QTY
	MM	INCH	
SAR1106300	110X63	4"X2"	78
SAR1107500	110X75	4"X2 ½"	78
SAR1109000	110X90	4"X3"	78

## MALE THREADED ADAPTER



CODE	SIZE		QTY
	MM	INCH	
SAMTA00063	63	2"	-
SAMTA00075	75	2 ½"	-
SAMTA00090	90	3"	-
SAMTA00110	110	4"	-

## REDUCER BUSH



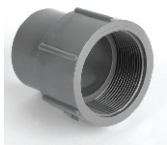
CODE	SIZE		QTY
	MM	INCH	
SARB755000	75X50	2½"X1½"	140
SARB756300	75X63	2½"X2½"	140
SARB905000	90X50	3½"X 1½"	100
SARB906300	90X63	3½"X 2½"	100
SARB907500	90X75	3½"X 2½"	100
SARB110630	110X63	4½"X 2½"	50
SARB110750	110X75	4"X 2"	50
SARB110900	110X90	4"X3"	50

## END CAP



CODE	SIZE		QTY
	MM	INCH	
SAEC000063	63	2"	308
SAEC000075	75	2 1/2"	162
SAEC000090	90	3"	120
SAEC000110	110	4"	64
SAEC000140	140	5"	-
SAEC000160	160	6"	-
SAEC000180	180	7"	-
SAEC000200	200	8"	-

## FEMALE THREADED ADAPTER



CODE	SIZE		QTY
	MM	INCH	
SAFTA00063	63	2"	-
SAFTA00075	75	2 ½"	-
SAFTA00090	90	3"	-
SAFTA00110	110	4"	-

## END CAP THREADED



CODE	SIZE		QTY
	MM	INCH	
SAECT00063	63	2"	-
SAECT00075	75	2½"	-
SAECT00090	90	3"	-
SAECT00110	110	4"	-
SAECT00140	140	5"	-
SAECT00160	160	6"	-
SAECT00180	180	7"	-
SAECT00200	200	8"	-

## HEAVY DUTY SOLVENT CEMENT



CODE	SIZE		QTY
	MM	INCH	
SHDSC00029	29	TUBE	384
SHDSC00059	59	TIN	240
SHDSC00118	118	TIN	144
SHDSC00237	237	TIN	96

## RRJ COUPLING



CODE	SIZE		QTY
	MM	INCH	
SARRJ00063	63	2"	-
SARRJ00075	75	2½"	-
SARRJ00090	90	3"	-
SARRJ00110	110	4"	-
SARRJ00140	140	5"	-
SARRJ00160	160	6"	-
SARRJ00180	180	7"	-
SARRJ00200	200	8"	-



Shivjal®  
**AQUAFLOW**  
UPVC PLUMBING SYSTEM



## UPVC PLUMBING PIPES & FITTINGS

Shivjal Aquaflow plumbing system is the most suitable, easy and economical solution for transportation and distribution of potable water. It is technically superior, cost effective and offers many advantages. Easy to install and most suitable for terrace looping down-take and up-take lines in buildings industries.

### PIPES : IS :

SCH 40 & 80 as per ASTM D-1785

### FITTINGS:



15mm (1/2") to 50 mm (2")  
SCH 80 as per ASTM D-2467

### AVAILABLE SIZE :

15mm (1/2") to 50mm (2")

### APPLICATIONS:



Nominal Size	Size in Inch	Avg. OD (MM)	SCH -40		SCH-80		Certifications
			Min Wall Thickness (mm)	Max. Working Pre. at 23"(kg/cm <sup>2</sup> )	Min Wall Thickness (mm)	Max. Working Pre. at 23"(kg/cm <sup>2</sup> )	
15mm	1/2"	21.34	2.77	42.19	3.73	59.76	 
20mm	3/4"	26.67	2.87	33.75	3.91	48.51	
25mm	1"	33.40	3.38	31.64	4.55	44.29	
32mm	1 1/4"	42.16	3.56	26.01	4.85	36.56	
40mm	1 1/2"	48.26	3.68	23.20	5.08	33.04	
50mm	2"	60.32	3.91	19.69	5.08	33.04	

### uPVC PIPES -SCH 40

CODE	SIZE		QTY 3MTR
	MM	INCH	
SUPS400015	15	1/2"	50
SUPS400020	20	3/4"	35
SUPS400025	25	1"	25
SUPS400032	32	1 1/4"	15
SUPS400040	40	1 1/2"	15
SUPS400050	50	2"	10



### uPVC PIPES -SCH 80

CODE	SIZE		QTY 3MTR
	MM	INCH	
SUPS800015	15	1/2"	50
SUPS800020	20	3/4"	35
SUPS800025	25	1"	25
SUPS800032	32	1 1/4"	15
SUPS800040	40	1 1/2"	15
SUPS800050	50	2"	10

## UPVC FITTINGS (ASTM D-2467)

### REDUCER MALE THREADED ADAPTER

CODE	SIZE		QTY	
	MM	INCH	BAG	BOX
SURMTA2015	20X15	3/4"X1/2"	-	-

### REDUCER FEMALE THREADED ADAPTER

CODE	SIZE		QTY	
	MM	INCH	BAG	BOX
SURFTA2015	20X15	3/4"X1/2"	125	1000





# UPVC PLUMBING PIPES & FITTINGS



## REDUCER ELBOW 90°



CODE	SIZE		QTY	
	MM	INCH	BAG	BOX
SURE201500	20X15	¾"X ½"	75	500
SURE251500	25X15	1"X ½"	50	350
SURE252000	25X20	1"X ¾"	50	350

## COUPLER



CODE	SIZE		QTY	
	MM	INCH	BAG	BOX
SUC1500000	15	½"	150	1350
SUC2000000	20	¾"	100	800
SUC2500000	25	1"	60	420
SUC3200000	32	1¼"	35	245
SUC4000000	40	1½"	25	175
SUC5000000	50	2"	15	135

## TEE



CODE	SIZE		QTY	
	MM	INCH	BAG	BOX
SUT1500000	15	½"	90	630
SUT2000000	20	¾"	50	350
SUT2500000	25	1"	30	210
SUT3200000	32	1¼"	15	120
SUT4000000	40	1½"	12	84
SUT5000000	50	2"	6	48

## ELBOW 90°



CODE	SIZE		QTY	
	MM	INCH	BAG	BOX
SUE9015000	15	½"	125	1000
SUE9020000	20	¾"	75	525
SUE9025000	25	1"	50	300
SUE9032000	32	1¼"	20	180
SUE9040000	40	1½"	15	135
SUE9050000	50	2"	10	80

## BRASS REDUCER MALE THREADED ADAPTER



CODE	SIZE		QTY	
	MM	INCH	BAG	BOX
SUBRMTA2015	20X15	¾"X½"	65	520
SUBRMTA2515	25X15	1"X½"	50	450
SUBRMTA2520	25X20	1"X¾"	-	-

## BRASS REDUCER FEMALE THREADED ADAPTER



CODE	SIZE		QTY	
	MM	INCH	BAG	BOX
SUBRFTA2015	20X15	¾"X½"	80	720
SUBRFTA2515	25X15	1"X½"	60	540
SUBRFTA2520	25X20	1"X¾"	-	-

## UNION



CODE	SIZE		QTY	
	MM	INCH	BAG	BOX
SUU1500000	15	½"	70	560
SUU2000000	20	¾"	50	400
SUU2500000	25	1"	35	245
SUU3200000	32	1¼"	25	150
SUU4000000	40	1½"	15	105
SUU5000000	50	2"	9	63

## END CAP



CODE	SIZE		QTY	
	MM	INCH	BAG	BOX
SUEC150000	15	½"	300	2100
SUEC200000	20	¾"	175	1400
SUEC250000	25	1"	100	800
SUEC320000	32	1¼"	70	490
SUEC400000	40	1½"	45	360
SUEC500000	50	2"	30	210

## BUSHING



CODE	SIZE		QTY	
	MM	INCH	BAG	BOX
SUB2015000	20X15	¾"X½"	250	1750
SUB2515000	25X15	1"X½"	150	1200
SUB2520000	25X20	1"X¾"	150	1200
SUB3225000	32X25	1¼"X1"	100	600
SUB4025000	40X25	1½"X1"	60	480
SUB4032000	40X32	1½"X1¼"	70	490
SUB5025000	50X25	2"X1"	40	280
SUB5040000	50X40	2"X1½"	36	252

## ELBOW 45°



CODE	SIZE		QTY	
	MM	INCH	BAG	BOX
SU45E15000	15	½"	-	-
SU45E20000	20	¾"	-	-
SU45E25000	25	1"	50	350
SU45E32000	32	1¼"	-	-
SU45E40000	40	1½"	-	-
SU45E50000	50	2"	-	-

## 4 WAY TEE



CODE	SIZE		QTY	
	MM	INCH	BAG	BOX
SUFWT15000	15	½"	60	420
SUFWT20000	20	¾"	40	280
SUFWT25000	25	1"	20	160
SUFWT32000	32	1¼"	-	-
SUFWT40000	40	1½"	-	-
SUFWT50000	50	2"	-	-

## MALE THREADED ADAPTER



CODE	SIZE		QTY	
	MM	INCH	BAG	BOX
SUMTA15000	15	½"	250	1750
SUMTA20000	20	¾"	150	1050
SUMTA25000	25	1"	80	560
SUMTA32000	32	1¼"	55	330
SUMTA40000	40	1½"	30	240
SUMTA50000	50	2"	20	160

# UPVC PLUMBING PIPES & FITTINGS



## FEMALE THREADED ADAPTER



CODE	SIZE		QTY	
	MM	INCH	BAG	BOX
SUFTA15000	15	1/2"	200	1400
SUFTA20000	20	3/4"	100	900
SUFTA25000	25	1"	60	480
SUFTA32000	32	1 1/4"	35	280
SUFTA40000	40	1 1/2"	30	210
SUFTA50000	50	2"	20	140

## TANK NIPPLE THREADED



CODE	SIZE		QTY	
	MM	INCH	BAG	BOX
SUTNT15000	15	1/2"	100	800
SUTNT20000	20	3/4"	80	560
SUTNT25000	25	1"	40	320
SUTNT32000	32	1 1/4"	20	200
SUTNT40000	40	1 1/2"	16	144
SUTNT50000	20	2"	12	96

## BALL VALVE



CODE	SIZE		QTY	
	MM	INCH	BAG	BOX
SUBV150000	15	1/2"	50	350
SUBV200000	20	3/4"	50	210
SUBV250000	25	1"	15	135
SUBV320000	32	1 1/4"	10	80
SUBV400000	40	1 1/2"	-	-
SUBV500000	50	2"	-	-

## REDUCER TEE



CODE	SIZE		QTY	
	MM	INCH	BAG	BOX
SURT201500	20X15	3/4"X1/2"	50	350
SURT251500	25X15	1"X 1/2"	35	245
SURT252000	25X20	1"X 3/4"	35	245
SURT322500	32X25	1 1/4"X1"	15	120
SURT401500	40X15	1 1/2"X1/2"	12	96
SURT402000	40X20	1 1/2"X3/4"	12	96
SURT402500	40X25	1 1/2"X1"	12	96
SURT403200	40X32	1 1/2"X1 1/4"	12	96
SURT501500	50X15	2"X 1/2"	7	63
SURT502000	50X20	2"X 3/4"	8	64
SURT502500	50X25	2"X 1"	8	64
SURT503200	50X32	2"X 1 1/4"	8	64
SURT504000	50X40	2"X 1 1/2"	7	63

## REDUCER COUPLER



CODE	SIZE		QTY	
	MM	INCH	BAG	BOX
SURC201500	20X15	3/4"X1/2"	100	800
SURC251500	25X15	1"X 1/2"	60	600
SURC252000	25X20	1"X 3/4"	70	490
SURC322000	32X20	1 1/4"X3/4"	50	350
SURC322500	32X25	1 1/4"X1"	35	280
SURC402000	40X20	1 1/2"X3/4"	45	270
SURC402500	40X25	1 1/2"X1"	40	240
SURC403200	40X32	1 1/2"X1 1/4"	25	200

## BRASS ELBOW 90°



CODE	SIZE		QTY	
	MM	INCH	BAG	BOX
SUBE901500	15	1/2"	75	675
SUBE920500	20	3/4"	30	360
SUBE902500	25	1"	25	250
SUBE903200	32	1 1/4"	10	150
SUBE904000	40	1 1/2"	-	-
SUBE905000	50	2"	-	-

## BRASS TEE



CODE	SIZE		QTY	
	MM	INCH	BAG	BOX
SUBT150000	15	1/2"	50	450
SUBT200000	20	3/4"	25	275
SUBT250000	25	1"	20	180
SUBT320000	32	1 1/4"	10	110
SUBT400000	40	1 1/2"	-	-
SUBT500000	50	2"	-	-

## BRASS REDUCER ELBOW 90°



CODE	SIZE		QTY	
	MM	INCH	BAG	BOX
SUBRE20150	20X15	3/4"X1/2"	50	550
SUBRE25150	25X15	1"X1/2"	40	400
SUBRE25200	25X20	1"X 3/4"	25	350

## BRASS REDUCER TEE



CODE	SIZE		QTY	
	MM	INCH	BAG	BOX
SURBT20150	20X15	3/4"X1/2"	40	360
SURBT25150	25X15	1"X1/2"	25	250
SURBT25200	25X20	1"X 3/4"	20	200

## BRASS MALE THREADED ADAPTER



CODE	SIZE		QTY	
	MM	INCH	BAG	BOX
SUBMTA1500	15	1/2"	75	675
SUBMTA2000	20	3/4"	50	400
SUBMTA2500	25	1"	30	240
SUBMTA3200	32	1 1/4"	20	180
SUBMTA4000	40	1 1/2"	15	105
SUBMTA5000	50	2"	8	80

## BRASS FEMALE THREADED ADAPTER



CODE	SIZE		QTY	
	MM	INCH	BAG	BOX
SUBFTA1500	15	1/2"	100	900
SUBFTA2000	20	3/4"	50	500
SUBFTA2500	25	1"	35	280
SUBFTA3200	32	1 1/4"	20	200
SUBFTA4000	40	1 1/2"	20	140
SUBFTA5000	50	2"	12	96



Shivjal<sup>®</sup>  
**HIGHTECH**  
CPVC PLUMBING SYSTEM



# CPVC PLUMBING SYSTEMS FOR HOT & COLD WATER



World class Hygienic CPVC plumbing system for use in hot & cold water application. Higher life span in comparison with conventional plumbing systems to meet IS : 15778 and ASTM-D2846 specifications.

**PIPES : IS :**  
IS 15778

**FITTINGS:**  
15mm(½") to 50mm(2") in  
ASTM D-2846

**AVAILABLE SIZE :**  
15mm (½") to 50mm

**APPLICATIONS:**



Nominal Size	Size in Inch	Pipe od (SDR-11 & SDR-13.5)			Well Thickness (SDR-11)		Well Thickness (SDR-13.5)		Certifications
		Min	Max	Average	Min	Max	Min	Max	
15mm	½"	15.80	16.00	15.90	1.70*	2.20*	1.40*	1.90*	 ASTM INTERNATIONAL IS 7834 
20mm	¾"	22.10	22.30	22.20	2.00	2.50	1.70	2.20	
25mm	1"	28.50	28.70	28.60	2.60	3.10	2.10	2.60	
32mm	1 ½"	34.80	34.50	34.90	3.20	3.70	2.60	3.10	
40mm	1 ½"	41.20	41.40	41.30	3.80	4.30	3.10	3.60	
50mm	2"	53.90	54.10	54.00	4.90	5.50	4.00	4.60	

## CPVC PIPES (1615778)

CPVC PIPES (SDR11 CLASS-1)

CODE	SIZE		QTY	
	MM	INCH	BAG	BOX
SCPS111530	15	½"	100	100
SCPS112030	20	¾"	50	50
SCPS112530	25	1"	35	35
SCPS113230	32	1 ¼"	25	25
SCPS114030	40	1 ½"	15	15
SCPS115030	50	2"	10	10



CPVC PIPES (SDR13.5 CLASS-2)

CODE	SIZE		QTY	
	MM	INCH	BAG	BOX
SCPS131530	15	½"	100	100
SCPS132030	20	¾"	50	50
SCPS132530	25	1"	35	35
SCPS133230	32	1 ¼"	25	25
SCPS134030	40	1 ½"	15	15
SCPS135030	50	2"	10	10

## CPVC FITTINGS (ASTM D-2846)

TEE



CODE	SIZE		QTY	
	MM	INCH	BAG	BOX
SCT1500000	15	½"	480	1440
SCT2000000	20	¾"	480	1440
SCT2500000	25	1"	240	720
SCT3200000	32	1 ¼"	120	360
SCT4000000	40	1 ½"	72	216
SCT5000000	50	2"	72	216

ELBOW 90°



CODE	SIZE		QTY	
	MM	INCH	BAG	BOX
SCE9015000	15	½"	600	1800
SCE9020000	20	¾"	600	1800
SCE9025000	25	1"	300	900
SCE9032000	32	1 ¼"	200	600
SCE9040000	40	1 ½"	120	360
SCE9050000	50	2"	120	360

# CPVC PLUMBING SYSTEMS FOR HOT & COLD WATER



## COUPLER



CODE	SIZE		QTY	
	MM	INCH	BAG	BOX
SCC1500000	15	½"	960	2880
SCC2000000	20	¾"	960	2880
SCC2500000	25	1"	480	1440
SCC3200000	32	1 ¼"	270	810
SCC4000000	40	1 ½"	200	600
SCC5000000	50	2"	200	600

## REDUCER COUPLER



CODE	SIZE		QTY	
	MM	INCH	BAG	BOX
SCRC252000	25X20	1"X ¾"	600	1800
SCRC322000	32X20	1 ¼"X ¾"	400	1200
SCRC322500	32X25	1 ¼"X 1"	350	1050
SCRC402000	40X20	1 ½"X ¾"	280	840
SCRC402500	40X25	1 ½"X 1"	210	630
SCRC403200	40X32	1 ½"X 1 ¼"	180	540

## UNION



CODE	SIZE		QTY	
	MM	INCH	BAG	BOX
SCU1500000	15	½"	420	1260
SCU2000000	20	¾"	420	1260
SCU2500000	25	1"	210	630
SCU3200000	32	1 ¼"	120	360
SCU4000000	40	1 ½"	90	270
SCU5000000	50	2"	90	270

## END CAP



CODE	SIZE		QTY	
	MM	INCH	BAG	BOX
SCEC150000	15	1/2"	1800	5400
SCEC200000	20	3/4"	1800	5400
SCEC250000	25	1"	980	2940
SCEC320000	32	1 1/4"	560	1680
SCEC400000	40	1 1/2"	320	960
SCEC500000	50	2"	320	960

## BUSHING



CODE	SIZE		QTY	
	MM	INCH	BAG	BOX
SCB2520000	25X20	1"X ¾"	1200	3600
SCB3220000	32X20	1 ¼"X ¾"	700	2100
SCB3225000	32X25	1 ¼"X 1"	700	2100
SCB4020000	40X20	1 ½"X ¾"	300	900
SCB4025000	40X25	1 ½"X 1"	300	900
SCB4032000	40X32	1 ½"X 1 ¼"	300	900

## ELBOW 45°



CODE	SIZE		QTY	
	MM	INCH	BAG	BOX
SC45E20000	20	¾"	960	2880
SC45E25000	25	1"	480	1440
SC45E32000	32	1 ¼"	270	810

## 4 WAY TEE



CODE	SIZE		QTY	
	MM	INCH	BAG	BOX
SCFWT15000	15	½"	-	-
SCFWT20000	20	¾"	360	1080
SCFWT25000	25	1"	200	600
SCFWT32000	32	1 ¼"	90	270
SCFWT40000	40	1 ½"	-	-
SCFWT50000	50	2"	-	-

## MALE THREADED ADAPTER



CODE	SIZE		QTY	
	MM	INCH	BAG	BOX
SCMTA15000	15	1/2"	-	-
SCMTA20000	20	¾"	1200	3600
SCMTA25000	25	1"	640	1920
SCMTA32000	32	1 ¼"	240	720
SCMTA40000	40	1 ½"	150	450
SCMTA50000	50	2"	-	-

## FEMALE THREADED ADAPTER



CODE	SIZE		QTY	
	MM	INCH	BAG	BOX
SCFTA15000		½"	-	-
SCFTA20000		¾"	900	2700
SCFTA25000		1"	420	1260
SCFTA32000		1 ¼"	210	630
SCFTA40000		1 ½"	150	450
SCFTA50000		2"	-	-

## REDUCER TEE



CODE	SIZE		QTY	
	MM	INCH	BAG	BOX
SCRT252000	25x20	1"X ¾"	320	960
SCRT322000	32x20	1 ¼"X ¾"	120	360
SCRT322500	32x25	1 ¼"X 1"	120	360
SCRT402000	40X20	1 ½"X ¾"	72	216
SCRT402500	40X25	1 ½"X 1"	72	216
SCRT403200	40X32	1 ½"X 1 ¼"	-	-

## REDUCER MALE THREADED ADAPTER



CODE	SIZE		QTY	
	MM	INCH	BAG	BOX
SCRMTA2015	20X15	¾"X ½"	1200	3600

## TANK NIPPLE THREADED



CODE	SIZE		QTY	
	MM	INCH	BAG	BOX
SCTNT20000	20	¾"	320	960
SCTNT25000	25	1"	180	540



# CPVC PLUMBING SYSTEMS FOR HOT & COLD WATER



## BRASS REDUCER ELBOW 90°



CODE	SIZE		QTY	
	MM	INCH	BAG	BOX
SCBRE20150	20X15	3/4"X1/2"	160	640
SCBRE25150	25X15	1"X1/2"	120	480
SCBRE25200	25X20	1"X 3/4"	100	400

## BRASS REDUCER TEE



CODE	SIZE		QTY	
	MM	INCH	BAG	BOX
SCRBT20150	20X15	3/4"	120	480
SCRBT25150	25X15	1 "	80	320
SCRBT25200	25X20	1 1/4"	-	-

## REDUCER FEMALE THREADED ADAPTER



CODE	SIZE		QTY	
	MM	INCH	BAG	BOX
SCRFTA2015	20X15	3/4"X1/2"	800	2400

## REDUCER ELBOW 90°



CODE	SIZE		QTY	
	MM	INCH	BAG	BOX
SCRE252000	25X20	1"X 3/4"	360	1080

## BRASS MALE THREADED ADAPTER



CODE	SIZE		QTY	
	MM	INCH	BAG	BOX
SCBMTA1500	15	1/2"	-	-
SCBMTA2000	20	3/4"	180	720
SCBMTA2500	25	1"	80	320
SCBMTA3200	32	1 1/4"	-	-
SCBMTA4000	40	1 1/2"	-	-
SCBMTA5000	50	2"	-	-

## BRASS FEMALE THREADED ADAPTER



CODE	SIZE		QTY	
	MM	INCH	BAG	BOX
SCBFTA1500	15	1/2"	-	-
SCBFTA2000	20	3/4"	210	840
SCBFTA2500	25	1"	100	400
SCBFTA3200	32	1 1/4"	-	-
SCBFTA4000	40	1 1/2"	-	-
SCBFTA5000	50	2"	-	-

## BRASS REDUCER MALE THREADED ADAPTER



CODE	SIZE		QTY	
	MM	INCH	BAG	BOX
SCBRMTA2015	20X15	3/4"X1/2"	240	960
SCBRMTA2515	25X15	1"X1/2"	160	640
SCBRMTA2520	25X20	1"X 3/4"	150	600

## BRASS REDUCER FEMALE THREADED ADAPTER



CODE	SIZE		QTY	
	MM	INCH	BAG	BOX
SCBRFTA2015	20X25	3/4"X1/2"	200	800
SCBRFTA2515	25X15	1"X1/2"	160	640
SCBRFTA2520	25X20	1"X 3/4"	120	480

## BRASS ELBOW 90°



CODE	SIZE		QTY	
	MM	INCH	BAG	BOX
SCBE901500	15	1/2"	-	-
SCBE920500	20	3/4"	140	560
SCBE902500	25	1"	-	-
SCBE903200	32	1 1/4"	-	-
SCBE904000	40	1 1/2"	-	-
SCBE905000	50	2"	-	-

## BRASS TEE



CODE	SIZE		QTY	
	MM	INCH	BAG	BOX
SCBT150000	15	1/2"	-	-
SCBT200000	20	3/4"	-	-
SCBT250000	25	1"	-	-
SCBT320000	32	1 1/4"	-	-
SCBT400000	40	1 1/2"	-	-
SCBT500000	50	2"	-	-

## BALL VALVE



CODE	SIZE		QTY	
	MM	INCH	BAG	BOX
SCBV150000	15	1/2"	-	-
SCBV200000	20	3/4"	144	144
SCBV250000	25	1"	100	100
SCBV320000	32	1 1/4"	60	60
SCBV400000	40	1 1/2"	48	48
SCBV500000	50	2"	-	-

Shivjal®  
**drainMASTER**  
LEAK FREE DRAINAGE SYSTEM



# SHIVJAL DRAIN MASTER RINGFIT & SELFIT LEAK FREE DRAINAGE SYSTEM



Shivjal Drain Master ISI marked pipes are available in both ringfit & selfit with two different class of pipe named as Type A & Type B pipes are for use in ventilation and rain water application while type B pipes are recommended for soil and waste discharge applications. Pipes are available in different lengths with single and double sockets.

**PIPES : IS :**

IS 13592 Type A & Type B

**FITTINGS:**

75mm/90mm/110mm/160mm



IS 14735

**AVAILABLE SIZE :**

75mm/90mm/110mm/160mm

**APPLICATIONS:**



Nominal Size	Mean Outside Diameter		TYPE A Wall Thickness		TYPE B Wall Thickness		Certifications
	Min	Max	Min	Max	Min	Max	
75mm	75.00	75.30	1.80	2.20	3.20	3.80	 
90mm	90.00	90.30	1.90	2.30	3.20	3.80	
110mm	110.0	110.4	2.20	2.70	3.20	3.80	
160mm	160.0	160.5	3.20	3.80	4.00	4.60	

## SWR PVC PIPES (IS 13592)

**SWR RING FIT TYPE A**

CODE	SIZE		LENGTH
	MM	INCH	
SSRFA07520	75	2 1/2"	20 FT
SSRFA07510	75	2 1/2"	10 FT
SSRFA09020	90	3"	20 FT
SSRFA09010	90	3"	10 FT
SSRFA11020	110	4"	20 FT
SSRFA11010	110	4"	10 FT
SSRFA16020	160	6"	20 FT
SSRFA16010	160	6"	10 FT



**SWR RING FIT TYPE B**

CODE	SIZE		LENGTH
	MM	INCH	
SSRFB07520	75	2 1/2"	20 FT
SSRFB07510	75	2 1/2"	10 FT
SSRFB09020	90	3"	20 FT
SSRFB09010	90	3"	10 FT
SSRFB11020	110	4"	20 FT
SSRFB11010	110	4"	10 FT
SSRFB16020	160	6"	20 FT
SSRFB16010	160	6"	10 FT



# SHIVJAL DRAIN MASTER RINGFIT & SELFIT LEAK FREE DRAINAGE SYSTEM



## SWR PVC FITTINGS (IS 14735)

### SWR BEND 87.5 (RING FIT)



CODE	SIZE		QUANTITY
	MM	INCH	
SSRFB00075	75	2 1/2"	60
SSRFB00110	110	4"	40
SSRFB00160	160	6"	12

### SWR BEND 87.5° DOOR (RING FIT)



CODE	SIZE		QUANTITY
	MM	INCH	
SSRFB00075	75	2 1/2"	48
SSRFB00110	110	4"	32
SSRFB00160	160	6"	10

### SWR SHOE BEND 45 (RING FIT)



CODE	SIZE		QUANTITY
	MM	INCH	
SSRFSB00075	75	2 1/2"	80
SSRFSB00110	110	4"	52
SSRFSB00160	160	6"	-

### SWR SINGLE TEE (RING FIT)



CODE	SIZE		QUANTITY
	MM	INCH	
SSRFST00075	75	2 1/2"	72
SSRFST00110	110	4"	27
SSRFST11075	110X75	4"X 2 1/2"	28

### SWR COUPLER (RING FIT)



CODE	SIZE		QUANTITY
	MM	INCH	
SSRFC000075	75	2 1/2"	75
SSRFC000110	110	4"	60
SSRFC011075	110X75	4"X 2 1/2"	60

### SWR SINGLE Y (RING FIT)



CODE	SIZE		QUANTITY
	MM	INCH	
SSRFSY00075	75	2 1/2"	30
SSRFSY00110	110	4"	20

### SWR SINGLE Y DOOR (RING FIT)



CODE	SIZE		QUANTITY
	MM	INCH	
SSRFSYD0075	75	2 1/2"	24
SSRFSYD0110	110	4"	16

### SWR CLEANSING PIPE (RING FIT)



CODE	SIZE		QUANTITY
	MM	INCH	
SSRFCLP0075	75	2 1/2"	82
SSRFCLP0110	110	4"	30

### SWR DOOR CAP



CODE	SIZE		QUANTITY
	MM	INCH	
SSRFDC0075	75	2 1/2"	200
SSRFDC0110	110	4"	125

### SWR RUBBER RING



CODE	SIZE		QUANTITY
	MM	INCH	
SSRFRR0075	75	2 1/2"	1000
SSRFRR0110	110	4"	1000

## SWR PVC PIPES (IS 13592)

### SWR SELF FIT TYPE A

CODE	SIZE		LENGTH
	MM	INCH	
SSSFA07520	75	2 1/2"	20 FT
SSSFA07510	75	2 1/2"	10 FT
SSSFA09020	90	3"	20 FT
SSSFA09010	90	3"	10 FT
SSSFA11020	110	4"	20 FT
SSSFA11010	110	4"	10 FT
SSSFA16020	160	6"	20 FT
SSSFA16010	160	6"	10 FT



### SWR SELF FIT TYPE B

CODE	SIZE		LENGTH
	MM	INCH	
SSSFB07520	75	2 1/2"	20 FT
SSSFB07510	75	2 1/2"	10 FT
SSSFB09020	90	3"	20 FT
SSSFB09010	90	3"	10 FT
SSSFB11020	110	4"	20 FT
SSSFB11010	110	4"	10 FT
SSSFB16020	160	6"	20 FT
SSSFB16010	160	6"	10 FT

# SHIVJAL DRAIN MASTER RINGFIT & SELFIT LEAK FREE DRAINAGE SYSTEM



## SWR BEND 87.5° (SELF FIT)



CODE	SIZE		QUANTITY
	MM	INCH	
SSSFBD00075	75	2 1/2"	60
SSSFBD00110	110	4"	40
SSSFBD00160	160	6"	-

## SWR BEND 87.5° (DOOR) SELF FIT



CODE	SIZE		QUANTITY
	MM	INCH	
SSSFBD00075	75	2 1/2"	48
SSSFBD00110	110	4"	32
SSSFBD00160	160	6"	-

## SWR SHOE BEND 45° (SELF FIT)



CODE	SIZE		QUANTITY
	MM	INCH	
SSSFSB00075	75	2 1/2"	92
SSSFSB00110	110	4"	52
SSSFSB00160	160	6"	-

## SWR SINGLE TEE (SELF FIT)



CODE	SIZE		QUANTITY
	MM	INCH	
SSSFST00075	75	2 1/2"	72
SSSFST00110	110	4"	24
SSSFST11075	110X72	4"X 2 1/2"	28

## SWR COUPLER (SELF FIT)



CODE	SIZE		QUANTITY
	MM	INCH	
SSSFC000075	75	2 1/2"	86
SSSFC000110	110	4"	68
SSSFC011075	110X75	4"X 2 1/2"	60

## SWR SINGLE Y (SELF FIT)



CODE	SIZE		QUANTITY
	MM	INCH	
SSSFSY00075	75	2 1/2"	30
SSSFSY00110	110	4"	20

## SWR SINGLE Y DOOR (SELF FIT)



CODE	SIZE		QUANTITY
	MM	INCH	
SSSFSYD00075	75	2 1/2"	24
SSSFSYD00110	110	4"	16

## SWR P TRAP



CODE	SIZE		QUANTITY
	MM	INCH	
SSSPT110110	110X110	4"X4"	17
SSSPT125110	125X110	5"X4"	17

## SWR Q TRAP



CODE	SIZE		QUANTITY
	MM	INCH	
SSSQT110110	110X110	4"X4"	15
SSSQT125110	125X110	5"X4"	15

## SWR S TRAP



CODE	SIZE		QUANTITY
	MM	INCH	
SSSST110110	110X110	4"X4"	12
SSSST125110	125X110	5"X4"	12

## SWR NAHANI TRAP

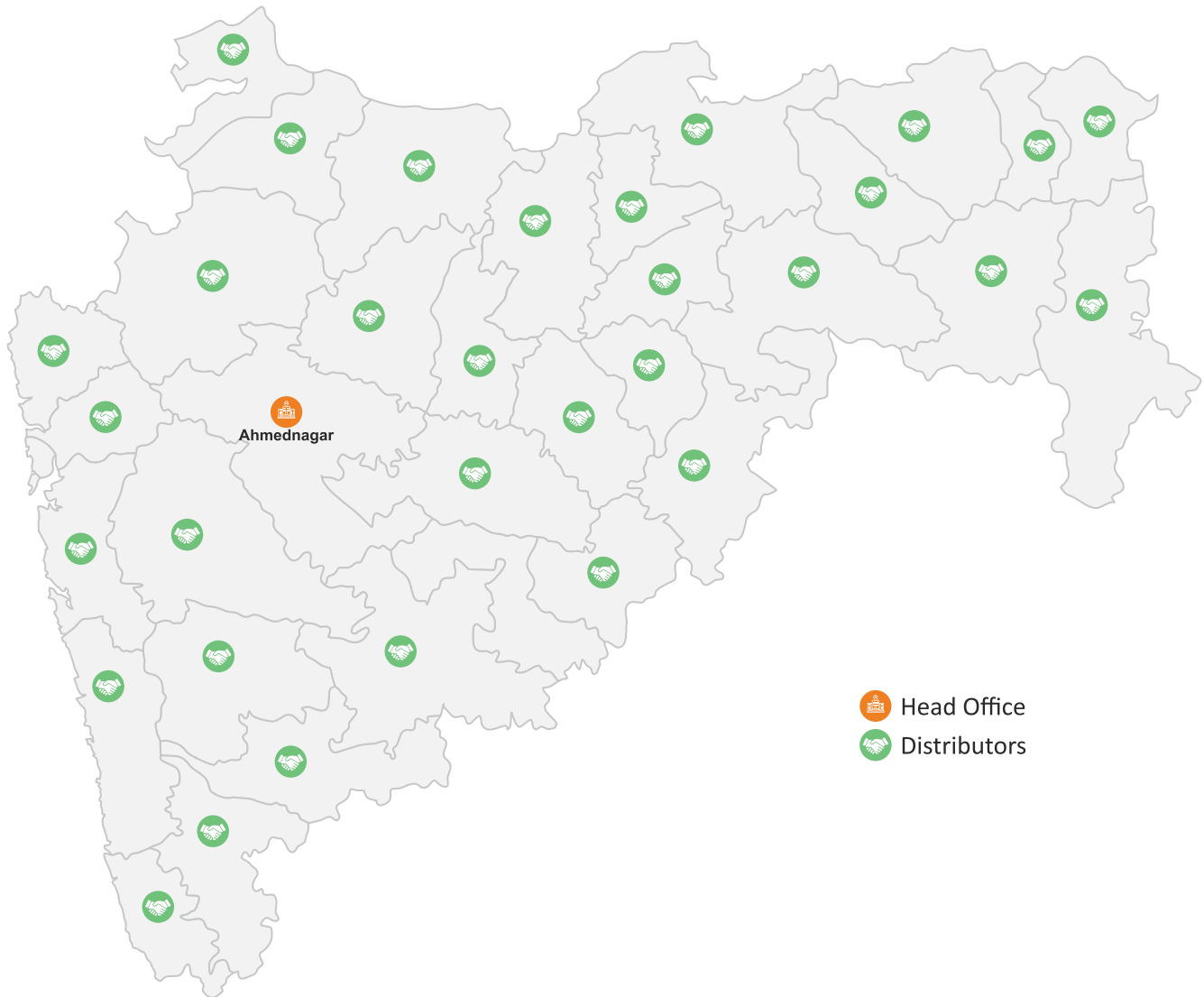




CODE	SIZE		QUANTITY
	MM	INCH	
SSSNT011063	110X110	4"X2"	60
SSSNT011075	125X110	4"X 2 1/2"	50
SSSNT011090	110X90	4"X3"	50
SSSNT110110	110X110	4"X4"	40

## HEAVY DUTY SOLVENT CEMENT



CODE	SIZE		QUANTITY
	MM	INCH	
SHDSC00029	29	TUBE	384
SHDSC00059	59	TIN	240
SHDSC00118	118	TIN	144
SHDSC00237	237	TIN	96



-  Head Office
-  Distributors

Distributor's / Dealer's Stamp

Follow us on:    

**Customer Care: 8584 8684 86**  
Please Call between 10 am to 6 pm

[www.shivjalpipes.com](http://www.shivjalpipes.com)





Approved by :



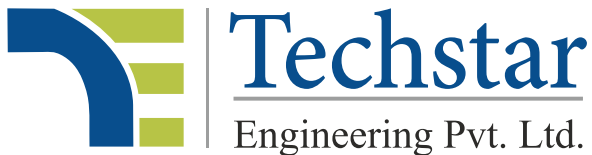
Certified ISO 9001:2015



MS Certification  
CAB# 119010



Disclaimer: All information contained in this manual is given in good faith and believed to be accurate and reliable. No responsibility can be accepted for any error, omissions or incorrect assumptions. Any specification can change without prior notice. All the images are shown for representation purposes only.



Agriculture



Irrigation



Residence



Commercial  
Complex



Industries

🏠 **Factory :** B-23, Newasa Industrial Area,  
Ghodegaon, Ahmednagar - 414 607.

**Corp. Office :** Shop NO. 6, Saiplaza,  
Gawade Mala, Pipeline Road, Savedi,  
Ahmednagar - 414003.

✉ **techstareng@gmail.com**  
**www.shivjalpipes.com**

📞 **Customer Care : 8584868486**

